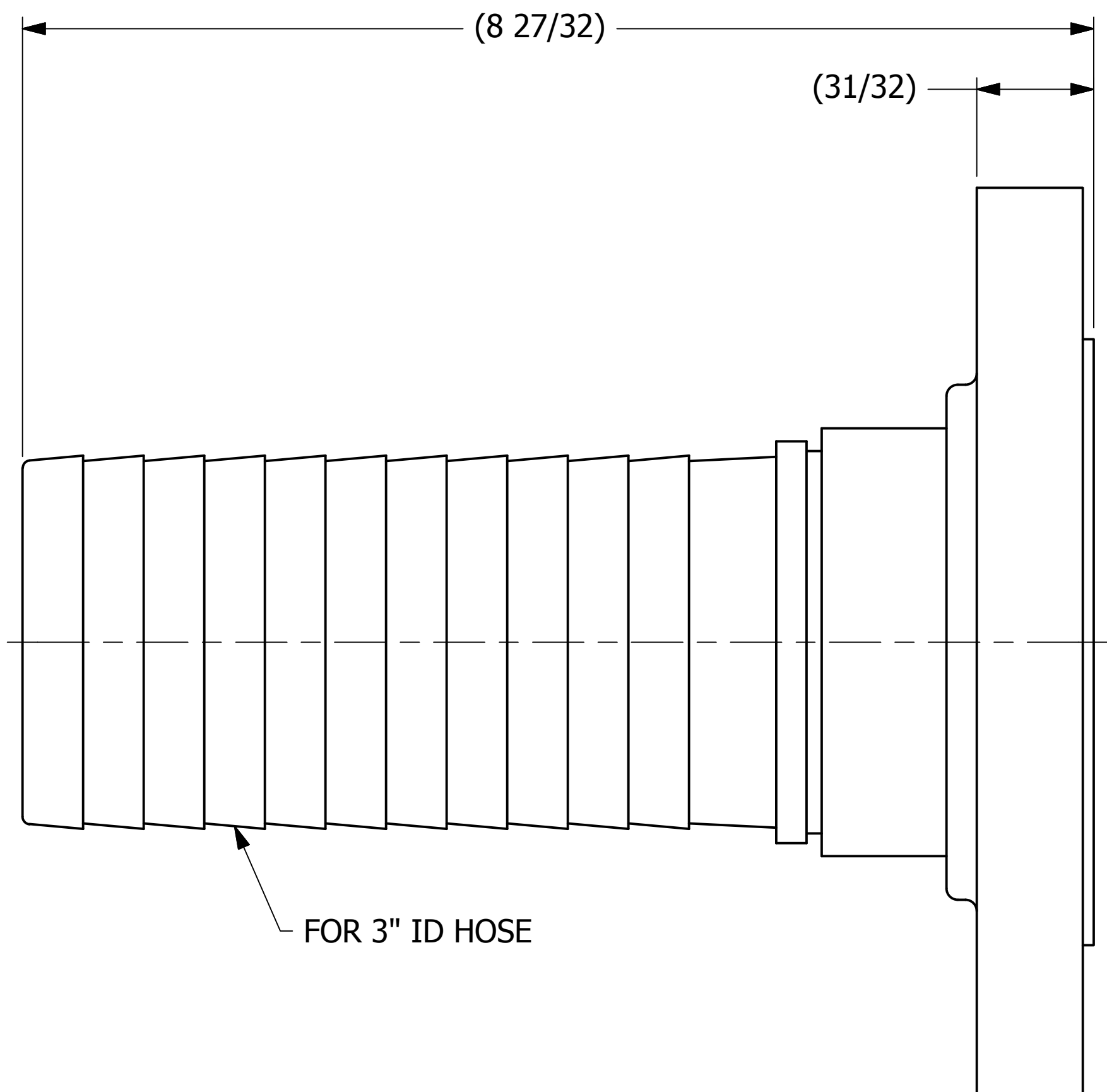
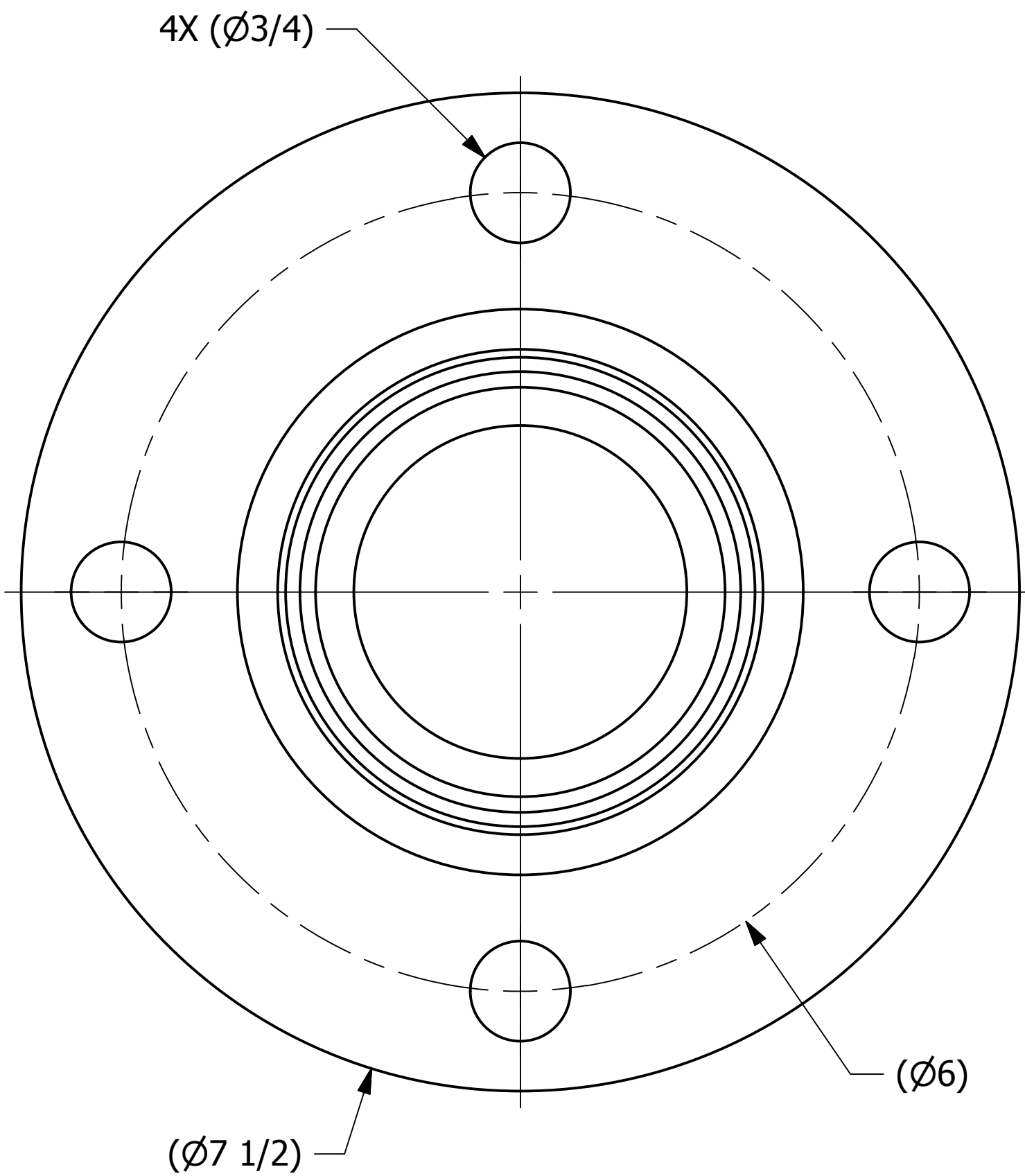


SALES DRAWING SALES DRAWING

SALES DRAWING SALES DRAWING



B	DGP	06-14-13	UPDATED TITLEBLOCK
A	ACC	01-22-04	ADDED PARTS INTO THE SYSTEM
REV	BY	DATE	DESCRIPTION

<small>UNLESS OTHERWISE SPECIFIED DIMENSIONAL TOLERANCES FRACTIONAL: ±1/16 X.XX: ±.03 X.XXX: ±.015 ANGLE: ±1° DEBURR ALL SHARP EDGES. ALL MACHINED SURFACES TO HAVE A 125 RMS FINISH UNLESS NOTED OTHERWISE.</small>	DRAWN BY:	ACC
	CHECKED BY:	
	PROTOTYPE BY:	ACC
	PROTOTYPE DATE:	1/22/2004
	APPROVED FOR PRODUCTION BY:	ACC
THIRD ANGLE PROJECTION	PRODUCTION DATE:	1/22/2004

<b>SALCO PRODUCTS, INC.</b>		
PART NAME: <b>FLANGED HOSE BARB 3" 150LB</b>		
MATERIAL: <b>SS / SALCO PE</b>		
PROJECT #: <b>030708</b>	SHEET #: <b>1 OF 1</b>	SCALE: <b>1:1</b>
DRAWING #: <b>C18683</b>	PART #: <b>HS3FTBSS</b>	

THIS PRINT, PROPERTY OF SALCO PRODUCTS INC., CONTAINS PROPRIETARY INFORMATION AND MUST NOT BE COPIED, REPRODUCED, OR USED DETRIMENTALLY TO OUR INTEREST.

